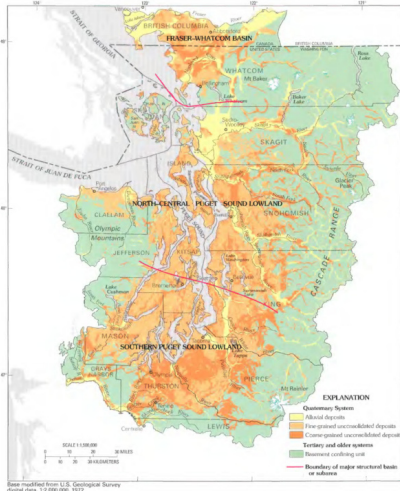




SPRING 2022



WORLD WATER DAY

This year's theme for World Water Day is "Groundwater, making the invisible, visible"

What is groundwater? It is water that is in the ground beneath us. The top of the saturated groundwater is called the 'water table'. Groundwater occupies the spaces in gravel, split rock, sand, and other subsurface materials. Aquifers are saturated areas of groundwater, and may be well defined. The Ogallala Aquifer is the largest aquifer in the United States. It is part of the High Plains aquifer system, which underlies parts of eight states from Texas to South Dakota. An aquifer may be a few feet to several thousand feet thick, and less than a square mile or hundreds of thousands of square miles in area. For example, the Ogallala Aquifer underlies about 280,000 square miles in 8 states— Colorado, Kansas, Nebraska, New Mexico, Oklahoma, South Dakota, Texas, and Wyoming.

ANNUAL PLANT EXCHANGE

In 2019 we started our annual plant exchange and it continues to be a great success. Thank you to the many participants and the variety of their contributions!

Beginning in **APRIL** and running until **SEPTEMBER** consider taking part in this exchange as you tend your garden, and divide plants. Come down and peruse the plants at our office near the entrance gate.

The District has 'seeded' the project this year with native plant starts of:

- Beargrass – *Xerophyllum tenax*
- Red Twig Dogwood – *Cornus sericea*
- Salal – *Gaultheria shallon*
- Tall Oregon Grape – *Mahonia aquifolium*
- Pacific Crabapple – *Malus fusca*



Our list of guidelines is short, please continue to:

Identify your donations as best you can with tags.

Bring your plants in pots. (We have 1 gallon pots available if you need them)

Leave as many plants as you take.

Please don't bring invasive or noxious weed species (see more below)

The community of LFP is legendary for its gardens and generosity and we appreciate your contributions!



Noxious weeds -Please help control noxious weeds – King County has information and identification guides to help you. Use the QR to visit our website for more information and links.

Almost 90% of the freshwater on earth is groundwater, and 60% of the US uses it for drinking water. It is also the largest source of US crop irrigation water at about 43% and accounts for about 1/3rd of industrial water used. Groundwater in the US is 96% freshwater, and about 4% brackish or saltwater.

There is an immense amount of water in aquifers below the earth's surface. In fact, in the contiguous USA, there is over a thousand times more water in the ground than is in all the country's rivers and lakes combined.

We live in what is known as the Puget Sound Lowland – bordered roughly on the north by the Fraser River and the US-Canadian border, on the west by the Olympic Mountains, on the east by the Cascades, and on the south by the Chehalis hills. The Lowland covers about 17,600 square miles, about 2,500 square miles of which is saltwater. There are at least 30,000 freshwater wells in the Lowland most of which (80% or so) are less than 175 feet deep. Due the effects of glaciation, there is a large number of aquifers in the region.

(This feature article by Advisory Committee Member Eric Strom is continued on our website. Scan the QR to go directly to the article)

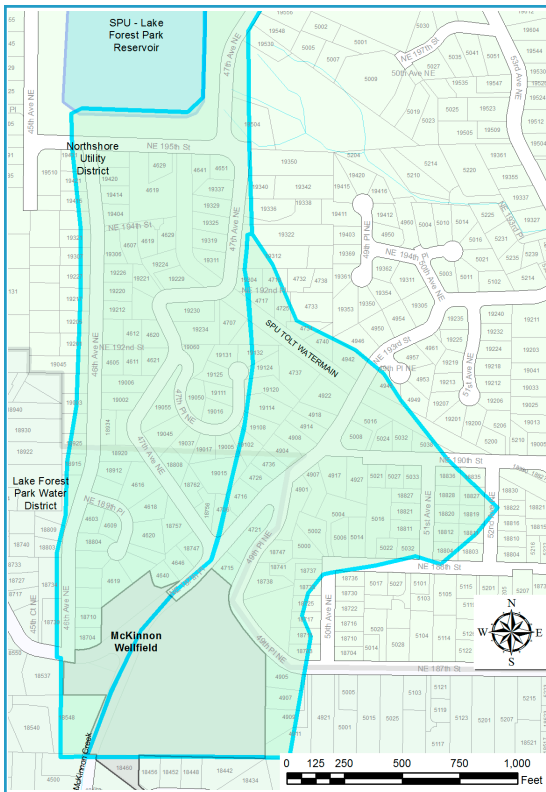


BOARD MEETINGS

Our Commissioner Board meetings are held the 4th Tuesday of the month at 6 PM. Meeting agendas and call in information if needed is posted on the District's website at least 24 hours prior to the meeting.

WATER QUALITY

Our watershed provides untreated chemical free water to our customers and a natural habitat for wildlife. Please do your part to protect our water resource by limiting the use of fertilizers especially in the shaded areas shown in the map below.



WATER CONSERVATION

The District encourages planting of **native species**. These plants require less water and reduce garden chemicals as they are acclimated to grow in the local environment. Now is a great time to plant native species. Plants have a much easier time acclimating this time of year and let nature do the watering!

See a list of potential species at www.wnps.org, the WA Native Plant Society website.

Water Saving Tips

- Spreading a layer of organic mulch or grass clippings around plants retains moisture and saves water, time and money.
- One faucet dripping every second adds up to five gallons a day. Fix your drips!

WATER PROTECTOR AWARD

Customers of Lake Forest Park Water District enjoy untreated well water because we pump from an aquifer that has consistently produced an adequate supply of quality water. We value this resource and in an effort to encourage the protection of it, each year the district recognizes someone that has made a prominent effort to protect it.

Presented to Cheryl Brady "With appreciation of your steadfast leadership and continual source water protection advocacy."



Cheryl has been inspirational in her dedication to protect our water and raise community awareness of this great resource that we enjoy. She was a founding member of the Wellfield Protection and Communication Advisory Committee (Adcom) and has served faithfully since that time, leading with a willingness to take on any task. During the pandemic Cheryl was chairperson and instrumental in holding the group together; despite the challenges of zoom meetings she encouraged dialog and brought energy and a sense of fun to the group while progressing on various projects.

Congratulations Mrs. Cheryl Brady! Your continuing engagement, leadership and advocacy for protection of our community's resources are important, exemplary and inspirational. On behalf of the LFPWD community, thank you!



BEST TASTING WATER DECALS!

Support your Water District at your business, home or on your car window. Contact us at the office and we will get you your 'Best Tasting Water' vinyl decal.

You are receiving this Newsletter because you are either a District customer; reside within our Wellhead Protection Area or are within our corporate boundaries

Know what's below.
Call 811 before you dig.

MISSION

"Lake Forest Park Water District strives to provide high quality water, sourced from our local aquifer, at the lowest reasonable cost, while investing in our infrastructure and maintaining the highest level of customer service."

GENERAL MANAGER

• Alan Kerley

COMMISSIONERS

- David Hammond: Secretary
- Bill Donahue: President
- Eli Zehner: Treasurer

CONTACT INFORMATION

Lake Forest Park Water District
4029 NE 178th St.
Lake Forest Park, WA 98155
(206) 365-3211 www.LFPWD.org
Office@lfpwd.org